



---

# STOLEN HERITAGE

---

A Casefile for the Rivers of London RPG



JANUARY 21, 2022

BY PAUL FISHER

CONTACT: [PAUL.JAMES.FISHER.94@GMAIL.COM](mailto:PAUL.JAMES.FISHER.94@GMAIL.COM)

PURCHASE THE RIVERS OF LONDON RPG AT [CHAOSIUM.COM](http://CHAOSIUM.COM)

## Contents

Pitch .....	2
Organization.....	2
Licensing.....	2
Sources.....	2
Background .....	3
Overview .....	3
Approximate Timeline.....	3
All About Rona .....	4
Scenes and Sources.....	5
Flow Chart of Scenes.....	5
Wah Home .....	6
Alice’s Place.....	7
Juliet’s Home.....	7
Christie’s.....	8
James Gordon’s Flat.....	8
Farringdons’ .....	9
Visit the Library .....	9
Talk to Michael.....	9
Rona’s Apartment .....	10
Gallery Robbery .....	11
Art Heist .....	11
Calling America .....	11
Art and Antiquities.....	12
Resolution .....	12
Attachments and Handouts .....	13
Items Sold from the Estate of Timothy Gordon (Buyer Censored).....	13
Items Sold from the Estate of Timothy Gordon (Buyer Included) .....	13
New York Post: #NYC Ninja .....	14
Timothy Gordan’s Diary Entries .....	15
Michael’s Business Card.....	16
Character Portraits.....	17

## Pitch

A burglar has murdered wealthy lawyer Raymond Wah in his Mayfair home. While fleeing from the scene, they appear to used magic to leap from the 4<sup>th</sup> floor and escape unharmed. Now, the Folly must find this mysterious burglar before they escape justice and strike again.

## Organization

This casefile is organized in the following fashion. First, the background of the case and antagonist are laid out. Then, details for specific locations and approaches are laid out in the rough order players will encounter them, along with suggestions for the likely resolution. Finally, the last portion includes various handouts, reference photos/links, and character portraits.

## Licensing

You are free to use, share, and adapt this Casefile for personal non-commercial use. You cannot sell access to this casefile nor remove the licensing section. This Casefile uses trademarks and/or copyrights owned by Chaosium Inc/Moon Design Publications LLC, which are used under Chaosium Inc's Fan Material Policy. We are expressly prohibited from charging you to use or access this content. This Casefile is not published, endorsed, or specifically approved by Chaosium Inc. For more information about Chaosium Inc's products, please visit [www.chaosium.com](http://www.chaosium.com).

## Sources

[Internal Cultivation or External Strength?: Claiming Martial Arts in the Qing Period, Ian McNally, Ohio State University, 2019.](#)

## Background

### Overview

In November 1949, Ronsheng Jiang and his family were fleeing the Communist advance in the Southeast. To secure passage on a ship, he was scammed of a family collection of art and artifacts by, Timothy Gordan, a British Ship Captain who took them to San Francisco. This left him bitter and angry at Timothy.

He was a practitioner of mystic Tai Chi, a collection of magical practices mixed with traditional martial arts, that enhanced people's ability to climb, jump, and fight. His son was not interested in it but his granddaughter, Rona Jiang, learned the forms during the summer spent at his home in the in Northern California. When he died, he asked Rona to recover the family heirlooms.

Over the next ten years, Rona saved up a large sum to help finance their recovery. She approached Mr. Gordan and offer to purchase them for several hundred thousand but he laughed and pointed out that with recent shifts in the Asian Art market they worth many times that. Her attempts to appeal to his character and her situation were unsuccessful as Timothy laughed at her.

Shortly thereafter, Mr. Gordan died of a heart attack and most of his collection was placed for sale by his nephew.

Rona was able to acquire most of the collection but was unable to collect a number of items.

- A painting of her great grandfather by Zhu Da (famed late Qing painter) that remained in James Gordan's flat.
- An ornate jade necklace at Farringdon's in Farringdon north of the River.
- A pair of jade bookends now displayed at Bankside Gallery.
- A jewelry box of rosewood at the Mayfair second home of Lee Bee Wah a Singaporean businesswoman.
- A scroll displayed at the Asia Society and Museum in NYC.

She decided to steal the items back. She first stole the scroll displayed at the Asia Society and Museum. Then she went to London to recover the rest of the items. She has already stolen the jade necklace from Farringdon's.

She broke into Lee Bee Wah's home, collected the box, and while leaving was spotted by Raymond Wah who stepped back in shock and he fell down the stairs breaking his neck. See him obviously dead and with lights turning on she fled leaping out the fourth-floor window using the forms to softly land on a parked car. She fled in the night.

### Approximate Timeline

Dates following the start of the investigation may change due to player involvement.

**November, 1949:** Jiang family travels to American and loses family heirlooms.

**January, Present:** Rona Approaches Timothy Gordan

**May 26<sup>th</sup>, Present:** Rona recovers the scroll.

**July 1<sup>st</sup>, Present:** Rona recovers the necklace at Farringdon's.

**July 3<sup>rd</sup>, Present:** Rona recovers the box and Raymond Wah dies at his home.

**July 5<sup>th</sup>, Present:** Rona obtains the bookends from bankside Gallery.

**July 7<sup>th</sup>, Present:** Rona collects the portrait at James Gordan's Flat.

The special assessment unit is called in after a video is recovered from a home across the street that shows a woman jumping 30ft onto a car and not leaving a mark and seemingly being able to run away unharmed.

She plans to recover the bookends from the Bankside Gallery next and then the painting before returning to NYC via train to Paris.

### All About Rona

Rona Jiang is a woman in her early 20s. She is Asian American growing up in San Francisco and now works in Boston as a Lawyer. She describes her background as stereotypical immigrant with successful second gen immigrant parents who pushed her to work hard and follow in their success. She went to UCLA for undergraduate in Political Science and History before Law School, also, at UCLA. She graduated in the middle of her class and got a job for a big law firm handling financial transactions and licensing. She is on the shorter side and stocky with an athletic build. She runs and practices martial arts on a regular basis along with maintaining her magical skills. Her personal life is a bit of a mess due to being a workaholic and her last girlfriend dumped her for not spending enough time together and disagreement on having a kid.

As a kid, she spent her summers at her Grandparents home Marin County North of San Francisco where she learned martial arts and the magical side from her Grandpa. He told her all about the magical tradition and trained her to an elite level. He also explained how the family fortune was lost during the post-Qing fighting and the rise of Mao. He explains that as they were fleeing Mao, his father traded the family art to a British ship captain so the family could get a ride to America. He describes it as a shake-down where the price changed after the ship left port from a few things to all of it. She promised him that she would try to recover it and he gave her a list of items included and the name of the ship and its captain.

### Rona Jiang, Esquire and Noted Swordswomen

<b>STR:</b> 60	<b>CON:</b> 40	<b>DEX:</b> 60	<b>INT:</b> 80	<b>POW:</b> 50
<b>DB:</b> 0	<b>MOV:</b> 8	<b>MP:</b> 10	<b>Luck:</b> -	

**Short Staff:** Rona wields a short (30cm long) staff that she keeps inside an oversized handbag or in her coat that functions as a wizard's sword with 10 magic points.

#### Skills

Athletics 70%, Drive 60%, Navigate 30%, Observation 60%, Read Person 55%, Research 50%, Sense Vestigia 30%, Social 45%, 70% Fighting.

**Languages:** English (own) 60%, Cantonese 30%.

#### Magical Maneuvers:

The use of all methods tend to resemble over the top action movie fighting with people getting thrown back and seemingly impossible physical feats. Use of a maneuver adds a bonus die to a chase roll or imposes a penalty die to a players.

**Climb:** (1 mp per 10ft) Uses magic to create or enhance a series of handholds to quickly climb a building, cliff or a similar structure.

**Push:** (1mp) Functions the same as impello palma.

**Slow Fall:** (1 mp per 20 ft) Uses magic to slow a fall or decent down a latter or similar.

#### Signare

Cool mist, thwack of a stick, and scent of jasmine.

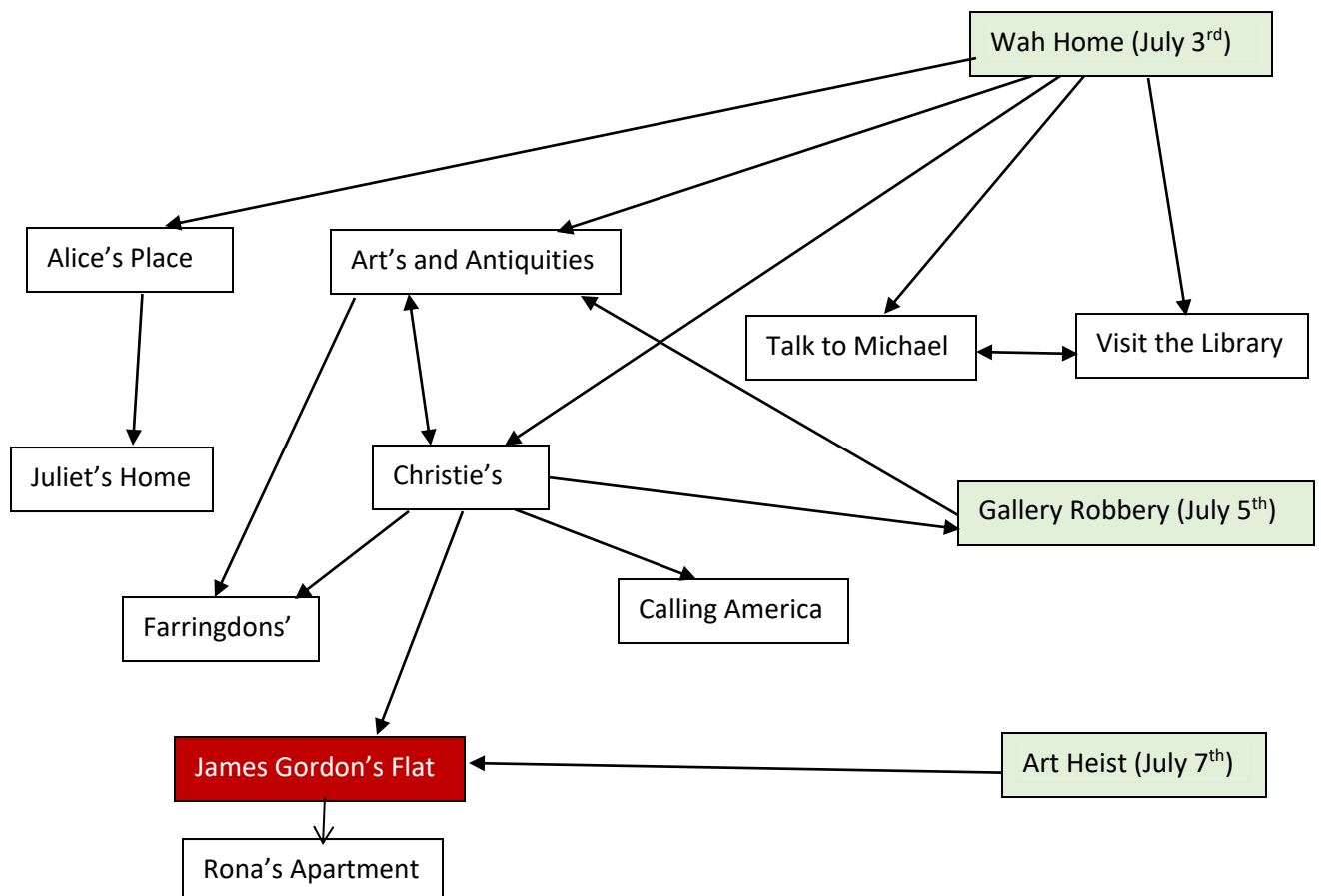
Her large salary and partnership income allowed her to save up a large sum to attempt to purchase the art. She approached Timothy Gordan who refused her offer of about 350k for the art as it had a market value of 5-10 million due to appreciation in the Asian art market. He laughed in her face. She arranged for an art dealer to monitor the British market for a few of the more distinctive items and found the auction shortly after Timothy's death of most of his collection. She arranged for a holding company, Narwhale Art (named after the ship they came to America on) to purchase many of the smaller dollar works paying about 600k for most of the family collection.

She is horrified by the death of Raymond and feels guilty but does not want to give up on her mission to recover the art. She can be persuaded to tell her side of the story and will be insistent that she did not try to hurt him and it was an accident.

## Scenes and Sources

### Flow Chart of Scenes

This chart lays out the basic connections between the scenes and sources listed in this case file. Players may move between scenes in a different order as the miss connections or make different ones than anticipated. They may also peruse alterative lines of investigation that may require improvising on your part. The case begins at the Wah home in the early morning of July 3<sup>rd</sup> and continues until Rona is caught or successfully flees back to America. Each of the green scenes occur at the listed time unless players have changed Rona's plans by direct interference such as by discovering her identity or



confrontation. You should make sure the party eventually speaks to James Gordon in his flat to clarify the case as his family papers provide the key backstory.

### Wah Home

The case begins early on the 3<sup>rd</sup> of July as the Folly is called to report to a scene due to possible Falcon involvement. Nightingale dispatches the party to the scene.. Home is located in Mayfair near Hyde park on Adam's row a collection of row homes. The [linked real estate listing](#) provides a good overview of what the basic layout of the house looks like.

The home belongs to Raymond Wah and his wife Lee Ban Wah. Raymond is a mildly overweight Singaporean-Chinese man in his mid 50s. He is senior lawyer at a Rajah & Tann (a major Singaporean law firm) and is in London to oversee the accusation of British real estate by a client. He was hardworking conventional business man whose vices are whiskey and an affair with artist Alice MacDonald. Died by falling down the second-floor stairs after chasing Rona up the stairs after he was woken by her his wife's jewelry box. He chased her up the stairs to the second floor and saw her burst from the second floor window and stumbled back in shock falling down the stairs and broke his neck on the way down.

The Met and ambulance service were called by Reginald Smith, the Wah's Butler cum property manager. Reginald is a roughly 50 year old white man who spent some time in the military as an aide to a colonial before retiring with his pension. He has accepted a bribe to hide Alice MacDonald's affair with Raymond from his wife who rarely travels to London as she is a sitting MP in Singapore. He lives on the second floor in the smallest bedroom. He heard Raymond's pursuit of Rona and the sound of him falling down the stairs and shattering glass before contacting the police. He checked the body and helped Alice MacDonald slip out the back door. He will not reveal Alice's presence without a successful **Social** check. Bonus die if the players have evidence of her presence.

Raymond's partner is Alice MacDonald, a 28 year old scottish female artist. She is on the rise for her vaguely impressionist paintings of London. She has had an affair with Raymond following him purchasing some of her art and sponsoring her exhibit. She has known him for about 2 years and a pair of her paintings are displayed in the home. She was spending the night with Raymond and was woken by Raymond shouting. A neighbor saw her fleeing down the alleyway on her way home giving her description.

Detective Inspector Miriam Stephanopoulos is running the crime scene. She will remain her usual curt self and want the party to investigate the funny business portion of this case. She will demand regular reports and will share information with the party. This can be used to feed missed clues to the party.

### Clues:

- **Sense vestigia** check on car and window has Rona's vestigia (Cool mist, thwack of a stick, and scent of jasmine).
- Neighbor saw Alice slipping out before the police arrive. A police officer finds this during a canvas of nearby homes.
- Broken glass in the dinning room from the broken window used for entry.
- Jewelry box of rosewood is missing. Recently purchased from Christie's.
- Reginald describes his side of the events. *Read Person* will reveal that he is hiding something.

- Alice has left behind some of her dirty clothes in her rush to leave which were crudely hidden by Reginald (Find with an *Observation* check)
- Raymond's financial records record rent for Alice's address. *Research* check will find.
- Reginald can give you Alice's address but will take a **Social** check. Bonus die if they have evidence.

### Alice's Place

Alice lives in a large studio in Storey's Cross (Link for a similar apartment). She uses it to paint and sells in nearby galleries. It is decorated with her paintings and an **Observation** check locates a painting partially covered in the corner of two women holding hands one who resembles Alice. Hard success notices the other woman has a diamond ring painted on her hand. Pulling the painting out reveals the other woman's face is slashed out and there is a title at the bottom "Yes?".

When confronted, or with a **Social** check when questioning she will tell the party about Juliet her ex-girlfriend who she proposed to a couple years ago. This led to a nasty breakup and Juliet made some threats and performed a one woman show entitled "This Was a Two Women Show" about their breakup. Alice has some drunken voice mails from the last few months from Juliet alternately wanting her back and threatening her and her new boyfriend. A couple months ago, Alice thought Juliet was following her and considered filing a restraining order.

### Clues

- Alice was in bed and didn't leave until after Raymond died. She heard chasing and shouting but didn't see the burglar as she was still asleep. Is sure the glass broke before hearing Raymond fall down the stairs.
- Alice has an ex, Juliet, that was stalking her after a bad breakup. Can provide Juliet's old address.
- Can confirm the restraining order with a solicitor, Helen Zlatosman, who provided a draft.

### Juliet's Home

Juliet Worhton-Firth is Alice's ex and has a flat in Battersea south of the river (Example link). She has dark hair and a slim build. They met at the Royal College of Art and dated for 3 years. They loved working on art together with Alice working on set design for Juliet's shows. As time went by, they got serious and Juliet felt things were moving too fast and got cold feet when Alice proposed. They fought and broke up with mutual bad feelings. Juliet started with anger and eventually moved past the anger into regret. She tried to rekindle things with Alice but it was too late and Alice had moved on. Juliet got a bit obsessed and developed a drinking problem. She would often wander around Alice's neighborhood while drunk and followed her a few times and found out about Alice's new boyfriend that way.

A couple of months ago she was busted for public intoxication and has been in AA to avoid a criminal record. Some meetings are near Mayfair and she walks by the Wah household on the way to the tube. She noticed about a week ago a woman watching the house from a car. The woman was east Asian and dressed in athleisure wear. Had binoculars and looked like a PI.

### Clues

- Has alibi for the night of the murder as she was at an AA event at the other end of the city.
- Spotted an East Asian woman watching the Wah household.



## Christie's

Christie's, the world's oldest fine art auctioneer, has sold fine art, furniture, jewelry and wine since James Christie conducted the first sale in London on 5 December 1766. Ever since Christie's has continued to provide the perfect backdrop for the sales of the world's finest collections and greatest works of art before their auction. Christie's moved to its global headquarters at 8 King Street, St. James's, in 1823, still its London headquarters today.

When questioned about the jewelry box, players will be put in contact with Kate Hunt who handled the box's purchase and sale. She will explain that James Gordan hired Christie's to handle the sale of most of his uncle's collection following Timothy Gordon's death. Christie's sold most of the items of significant worth but did redirect a number them to various partnered resellers due to not selling or low value. She notes that Farrington's is reselling a number of items of jewelry from Gordon's collection and will provide contact information and a list of items held by Farrington's. Kate will not reveal the buyers of most of items unless they a public institution. Obtaining a warrant via a **Law** roll will get the full list of buyers.

### Clues:

- Name and contact information of James Gordan.
- That Farrington's is selling some of the lessor pieces from the collection.
- The scroll in possession of the Asia Society and Museum.
- A list of all the art sold by Gordan and its current owner. This includes Rona's shell company Narwhale Art. An **Accounting** or **Law** role can connect Rona to the company.

## James Gordon's Flat

James Gordon lives in a newly built posh flat in Shoreditch north of the City of London ([Example](#)). He is a late 30s early 40s man with wavy brown hair and is dressed in business casual. The flat is decorated with a mix of contemporary and classic Asian art. Notable is a portrait of a Qing official by a renown painter Zhu Da of Bureaucrat Jiang. The metal frame gives off a vestigia of a thwack of a stick and jasmine tea. Gordon is in his late 30s with light brown hair and a mild paunch. He speaks with a posh accent holding a respectable 1<sup>st</sup> from Cambridge and works in the city as a mid-level trader at a smaller firm. His partner Alex is short, short haired, blond, and uses they/them pronouns. They are likely out working at a nursery school when visited.

Gordan can describe his uncle, his sale of the art, and provide documents that can list the origin of most of the art. He says there was an offer to buy some of the relevant art to his uncle about half a year and change ago.

### Clues:

- Origin of artwork by James Gordan, captain of the Narwhale.
- Similar Vestigia on painting.
- That all stolen art came from the same source and that the person they were scammed from ended up in San Francisco, America.
- His uncle was approached by a descendent of one of the sources who wanted to buy them back.

## Farringdons'

Farringdons' is a small family owned jewelry store that specializes in antique and ancient jewelry. They have a contract with Christie's to sell lower dollar items on contract that are purchased as part of a larger contract. They maintain a sizeable collection of jewelry and have expanded into Asian works in recent years.

Rona dropped by 2 days prior to Raymond's death and examined a number of pieces including the relevant necklace ([Art deco jade from Hong Kong](#)). She then texted 3 teenagers Lawrence, Mohmand, and Kurt (nick named the three stooges) who she paid 200 bucks to cause a commotion by the front of the store. While staff were distracted, she grabbed the necklace, knocking down a couple doors with an impellor-style variant before escaping into a crowd, grabbing a cab to leave the area prior to police response. She wore a business dress, carried a large handbag, wore sneakers, and wore a medical face mask.

### Clues

- Item stolen and description.
- The metal doors at the back have Rona's vesigita that can be matched to the others.
- Staff describe the woman as east Asian, American accent (tried to sound British at first), medium height, stocky, and well dressed.
- Teenagers can repeat description and give a whatsapp number she used to contact them. (Obtain form local bobbies). (Dead end as it's an easily changed google voice going to a burner.)

## Visit the Library

Talking to Nightingale about the maneuvers or passing a **research** check will bring up a journal of Claude Maxwell MacDonald a British official/practitioner in the boxer rebellion who had some familiarity with more mystic martial arts. His notes convey the following forms of information. See <Attachment for excerpts>.

- During the Boxer rebellion, there were martial artists who claimed they were bullet proof.
- This was partially true, some of the "boxers" were practitioners of a martial art that combined physical combat with magic that allowed for enhanced physical movement and deflect projectiles.
- They could climb sheer wall, jump off tall buildings, deflect bullets, and throw people around.
- This has some relationship with Tai Chi and a more formal magical tradition involving written spells associated with hanzi characters.

## Talk to Michael

Michael Cheung is Angelo-Chinese man in his late 20s. Short but broad shouldered with short black hair and usually carries a sword. He carries a business card reading legendary swordsman. Michael operates a Tai Chi studio in Chinatown. It has a double high floor It's on the 3<sup>rd</sup> floor above an HSBC bank branch and is a large studio space with about 12 feet tall. It's filled with martial arts and fitness gear. Michael will show the party some basic moves of what he does. Vesigia of rippling silk and sesame oil. Notes that members usually have a sword, staff or other item with magical embellishments.

He explains that martial artists would dabble in magical practice to extend their movement beyond what is normal for a typical person. Magical practice fit well with meditative practices and an emphasis on

perfection and practice worked well. A number of formal magical practices were adopted as the part of specialized during the Ming-Qing transition as rebellion and unrest lead to conflict between the literati due to conflicting loyalty. By the later Qing years, conflict between Manchu and Han groups and the increasing presence of European and Japanese business and missionaries. The opium wars and the Taiping rebellion then led to a weakening imperial government and increased reliance of local mutual aid societies including martial artists and other militias to deal with bandits, foreigners, and local disputes. The magical practices became more widespread among anti-westerners' martial art societies as they were associated with traditional Han practices and lacked the industrial requirements of modern guns and artillery.

This came to head during the Boxer Rebellion where Han nationalists rose up against foreign occupation and Christian missionaries with the Qing imperial apparatus eventually supported in part. Many martial societies, known as the "boxers", were core elements of the rebellion. Most of the boxers were not magical but there were some groups that were very proficient and were able to deflect bullets, climb presumably impassible obstacles, and throw people and items immense distances. This terrified western forces and lead to the deployment of additional forces and European magicians. Eventually, the boxers would be worn down by Maxim guns, artillery, and political defections among Qing generals especially in the south who helped to suppress martial societies. Western forces would eventually win pillaging and occupying parts of northern China with Japan and Russia occupying parts of northeastern China. Eventually most boxers will end up aligned with the nationalists and killed or driven off the mainland or pushed into the background during the cultural revolution worked to suppress certain traditional practices to spread communist values. In recent years, liberalization and promotion of traditional Han values have become acceptable and encouraged. Martial arts have become more publicly acceptable but the mystic aspects remain underground in the PRC. Mentions his uncle practices in in Shanghai but not openly.

Today, there are scattered mystic martial artists in places like Taiwan, Australia, North America, and other places with a significant Chinese dysphoria.

#### **Clues:**

- Background on Mystic Tai Chi.
- List of likely abilities.
- Can compare the list of known practitioners in Chinatown to the description. None match well. Will not give a full list due to the arrangement that he handles Chinatown.

#### **Rona's Apartment**

Rona is staying in Airbnb two floors directly above James. It has the most obnoxious live laugh love décor. She has fake documents claiming items are cheap modern artwork. If discovered she will use a stolen staff key to slip out the back using a freight elevator. The room has notes of her crimes and planned future targets. If discovered here she will immediately attempt to grab the painting from Gordon's apartment and flee. It is of greater worth to her than the rest.

#### **Clues**

- Evidence to tie her the prior crimes and all items stolen so far.
- Notes on her next targets. Name and address in the states.

## Gallery Robbery

Bankside Gallery is home to the Royal Watercolor Society and the Royal Society of Painter Printmakers. It is located on the River Thames south of the river near Waterloo. The gallery displays water colors and prints from contemporary work. They are currently showing a collection of modern prints inspired by classical Chinese art with examples of the older work alongside the contemporary works. The gallery also has an installation of one of [Toshiko Horiuchi MacAdam's crochet play areas](#) in the center atrium.

Rona's plan is simple: Disguised with a baseball cap, coat, and oversized sunglasses. She will walk into the gallery, withdraw a short club she uses for magic, and smash the case containing the bookends. She will place them into her purse before running toward the exit. The security guards attempt to intercept her at the THM sculpture. She knocks both of them back using Push into the sculpture where they are tangled up. She then flees outside before dumping her disguise in an alley before slipping into a nearby crowd and making her way to Waterloo station and returning to her apartment.

If the party is staking out the gallery, they can interrupt which will likely end in a chase.

### Clues

- Guard's badges will have the vestigia.
- Description of Rona.
- The bookends came from Timothy Gordan's collection and based on his diary came from the same Chinese passenger.
- Can find the dropped clothes and trace her with CCTV to Waterloo station and get a good picture.

## Art Heist

She plans to recover the painting by climbing down to James' balcony and entering that way to bypass security. She will then climb back up and leave with her luggage and the items via Eurostar.

James' apartment's balcony door is not locked and she will attempt to rob when James and Alex are out or late at night (3am). She has set up an Amazon Ring style camera on a vacant unit just down the hall and when preparing to hit will watch the hall for them to leave and she will also notice any cops she has run into. If that occurs, she will move to plan B. She will first send her luggage to St. Pancras. Plan B is set off a set of fireworks that sound like gun shots with a minute fuse in the alley across the street and call the 999 on a burner screaming to distract the police. Then she will kick down the door grab the painting, place it in her painting case, and leave.

If interrupted while stealing the painting, she will grab the painting, jump off the balcony, and float down (60ft).

## Calling America

Using the list of art sold at the auction, party members can identify that a few items were sold to American buyers and that the scroll sold to the Asia Society and Museum was stolen recently. Contacting Kimberly Reynolds will get the basic outline of the case and the connection to #NYCNinja.

#NYCNinja was a viral video of a drunk guy describing the women climbing a nearby building and breaking into it before fleeing cops. She will send a link to a NYC post article about the video and trend. See attachments.

## Clues:

- Confirms a pattern of ninja theft.
- Confirms the American connection.
- Confirms that only art obtained from the Jiang's was stolen.

## Art and Antiquities

The Art and Antiques Unit specialize in art thief and fraud. They can provide a list of recent cases including Farringdons' robbery of theft of art and antiquities. They are underfunded and overworked. They can also link the American Theft if asked about Ninjas/Cat Burglars/Asian Art. In general, they can be used to pass missed clues, connections, and tips to the party if they are stuck.

## Resolution

Resolution will depend in part on the information uncovered during the case and if Rona is caught. If Rona successfully flees the UK she will reach the US where it is politically inconvenient to extradite her unless the party has a strong case that this is a murder charge. If she is caught and confronted, she will obtain a brief (lawyer) and try to cut a deal for manslaughter or similar which would likely mean a short sentence and deportation to America. A party could push for murder charges but the crown prosecution would be unlikely to pursue and go for involuntary manslaughter.

Alternatively, If Rona's identity is discovered, she will go on the run dropping into student hostels and will be approached by Lady Caroline Linden-Limmer who will offer her sanctuary and help smuggle her out of the UK. Lady Caroline will approach the Folly to attempt to distract or stall them to help achieve this goal. She will bring up a minor issue with a friend having legal problems or similar to distract the party. She can also negotiate a surrender with an appropriate social role (penalty die if attempting to intimidate). This would likely lead to deportation or a short sentence for burglary.

If James Gordon, discovers the full facts and Rona is cleared of murder/manslaughter he is likely to give the painting by Zhu Da to Rona as an apology for his uncle's poor treatment of her family.

Other resolutions may be possible such as Rona's death while attempting to escape, her committing more serious crimes while attempting to escape (leading to a serious jail term), or some additional third party intervening for their own ends.

## Attachments and Handouts

### Items Sold from the Estate of Timothy Gordon (Buyer Censored)

Item	Buyer	Price
Scroll Depicting Salt Merchants Gardens	Asia Society and Museum, NYC	£700,000
Scroll of Nature Scene (Late Ming)	Private Buyer	£350,000
Print of Japanese Building (18 <sup>th</sup> C)	Mori Art Museum, Tokyo	£80,000
Ming Vase (23 cm)	Private Buyer	£23,000
Ming Vase (35 cm)	Asia Society and Museum, NYC	£41,000
Ming Vase (51 cm)	Private Buyer	£80,000
Jade Necklace (Art Deco)	Subcontracted to Farringtons'	-
Jade Earrings Lot	Private Buyer	£15,000
Painted Japanese Screen	Private Buyer	£824,000
Painting of a Siberian Tiger (Mid Qing)	Cleveland Museum of Art	£1,020,000
Chinese Translation of the Bible with Illustrations	Museum of the Bible, DC	£125,000
Bronze Horse (Early Manchu)	Mongolian Embassy, London	£46,000
Jewelry Box (Rosewood)	Raymond Wah	£17,000
Jade Bookends	Loaned to Bankside Gallery	-
Painting of a Chinese Merchant	Private Buyer	£425,000
Painting of a Japanese Ship (20 <sup>th</sup> C)	Private Buyer	£123,000
Sketch of Yongzheng Emperor	Shanghai Museum	£93,000

### Items Sold from the Estate of Timothy Gordon (Buyer Included)

Item	Buyer	Price
Scroll Depicting Salt Merchants Gardens	Asia Society and Museum, NYC	£700,000
Scroll of Nature Scene (Late Ming)	Masterworks LLC.	£350,000
Print of Japanese Building (18 <sup>th</sup> C)	Mori Art Museum, Tokyo	£80,000
Ming Vase (23 cm)	Narwhale Art	£23,000
Ming Vase (35 cm)	Asia Society and Museum, NYC	£41,000
Ming Vase (51 cm)	Jie Wen, USA	£80,000
Jade Necklace (Art Deco)	Subcontracted to Farringtons'	-
Jade Earrings Lot	Narwhale Art	£15,000
Painted Japanese Screen	Tadashi Yanai, JP	£824,000
Painting of a Siberian Tiger (Mid Qing)	Cleveland Museum of Art	£1,020,000
Chinese Translation of the Bible with Illustrations	Museum of the Bible, DC	£125,000
Bronze Horse (Early Manchu)	Mongolian Embassy, London	£46,000
Jewelry Box (Rosewood)	Raymond Wah	£17,000
Jade Bookends	Loaned to Bankside Gallery	-
Painting of a Chinese Merchant	Jack Ma Art Holding, LLC	£425,000
Painting of a Japanese Ship (20 <sup>th</sup> C)	Tadashi Yanai, JP	£123,000
Sketch of Yongzheng Emperor	Shanghai Museum	£93,000

SHOPPING



# #NYCNinja Is Proof Bill de Blasio's Defunded the NYPD

By Todd Manley

May 26, 2017 | 5:02pm | Updated

**MORE ON:**  
**ONLINE SHOPPING**

The 10 best refillable beauty products of 2023 to keep sustainability in check

QuickBooks Online launches Free Guided Setup to simplify your small business' finances with an expert

Get a whiff of the best perfumes for Valentine's Day and beyond: Our reviews

The 30 best Audible books we reviewed in 2023, from "Spare" to rom-coms

After a ninja robbed the Asia Society and Museum last night, did we see a city they wanted catch the thief or one that reveled in the lawlessness?

Thanks to Bill de Blasio's efforts to defund the police, the NYPD was unable station the necessary officers and conduct a manhunt to catch the women who climbed up six stories to the Asia Society's Chinese art exhibits and stole a valuable scroll.

As, Bill Rae Johnson, said in the trending video "Dude check out this ninja chick. She like totally climbing the building. You go girl". Yes, that's what we should be telling the children. You go girl, go commit a major crime?

First it was cat ladies, then it was catboys, and now its cat burglars! We need a mayor like Rudy who will stand up to these weirdos who steal priceless works of art and teach the millennials who condone this anarchy a firm lesson.

The Asia Society indicated that the scroll was purchased a month ago at auction in London and was anticipated to go on display later this summer as part of a new exhibit on the Qing dynasty.

Now their hopes are dashed, as the pillaging hordes of criminals infesting this city have caused further damage to the city. Instead of making videos of Larry David karate chopping cars with #NYCNinja, we need a crackdown againsts these criminals ruining this city.

## WHAT TO SHOP NOW



Review: The best online grocery delivery services you can use right now in 2023

Need a Valentine's Day gift? Shop these great deals on AirPods

The 47 best skincare products for dry skin that we tested last year

We ordered and reviewed 21 different meal kit brands for 2023

We tested 26 vitamin C serums and found our top 17 favorites that actually brighten the skin

AD

PandaDoc

**Keep cash flowing with error-free autotina**

## Timothy Gordan's Diary Entries

October 27<sup>th</sup>, 1949: Arrived in Shantou port. The city is filled with people fleeing the commie advance. I went shopping today and was able to buy a pair of Ming vases for a tiny fraction of what they would cost in Hong Kong. The cargo is delayed a couple weeks but we should be safe as the nationalists still hold Jieyang.

November 5<sup>th</sup>, 1949: Poor news from the front. Communist bastards have encircled Chaozhou but the first load of tea has arrived. I told the crew to return to the ship each night as we may need to quickly leave.

I also managed to find a wealthy Brit to pay for passage in one of our two staterooms. I then spent the money acquiring more art. Its impressive how despite people are here but good deals for me at least!

November 9<sup>th</sup>, 1949: Finally, the second load of tea arrived last night and they promised the third would arrive in the morning. I have the crew working all night to load it up. Only further bad news from Jieyang. Rumors of nationalist officials fleeing to Tiawan are all over the docks.

I have a meeting tonight with a wealthy Chinese man who is offering a great deal of art for safe passage abroad. From what I have heard the collection is impressive.

November 13<sup>th</sup>, 1949: Made it to sea finally. We had to delay to load Mr. Jiang's art onboard and ensure it was safely stored. He agreed to trade half of it for his family's safe passage but I must obtain the rest. Such a collection would be unmatched in England. I have begun to charge him greatly for food and board. I'm sure he will understand before the Narwhale reaches San Francisco.

December 17<sup>th</sup>, 1949: Arrived in San Francisco. Mr. Jiang and family left the ship to search for logging with their personal belongings but they left the crates of art behind. Unfortunately, I received a call that we must leave with all haste to pick up a cargo in Los Angeles. It looks like the collection is now mine as they lacked the foresight to offload their share. Their loss is my gain.

February 23<sup>rd</sup>, 1950: Finally unloaded the Jiang collection. It's even better than I imagined. There is an excellent painting by Zhu Di who is apparently one of the best Qing painters according to a chap I know that sells this stuff. There is also some excellent imperial jade including a necklace in the art deco style and many earrings in a beautiful rosewood box. There is also an excellent scroll, some bookends and many other minor pieces to add to my collection.



Michael's Business Card



## Character Portraits



Raymond Wah



James Gordan



Alice MacDonald



Rona Jiang



Juliet Worhton-Firth



Kate Hunt